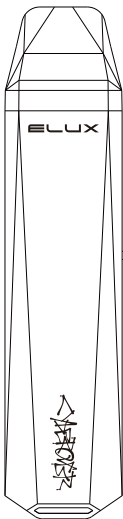


# ELUX

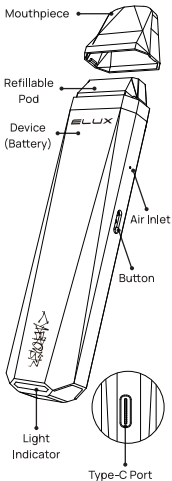
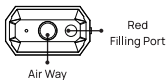
## CYBEROVER P1

### POD SYSTEM



User Manual

## ILLUSTRATION



Scan for Video Instruction

## SPECIFICATIONS

### Dimension (with Pod):

112.9 x 25.8 x 14.9 mm

**Battery Capacity:** 850 mAh

**Charging:** Type-C

**Pod Capacity:** 2 ml

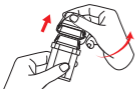
## INSTRUCTIONS

### Attention:

- A. Fill the e-liquid through the red filling port. Please don't fill through the middle airway.
- B. Let the pod sit for 5 minutes after the first filling to avoid coil burning.

### 1. POD FILLING AND REPLACEMENT

- A. Remove the mouthpiece in the direction shown in the following graphic.



- B. Put the nozzle of the e-liquid bottle into the red filling port to fill with the e-liquid.



- C. Please put the mouthpiece back and ensure it is properly covered as soon as the filling is done to avoid leakage, and let the pod sit for 5 minutes before use.



- D. For the pod replacement, please remove the used pod from the device and insert a new one.

### 2. VAPING

- Remove the insulating film on the bottom of the pod.
- Insert the filled pod into the device, and the motor will vibrate once and there will be a wave-flow light as the hint.
- Draw to vape.

**Attention:** Please change a new pod when there's unexpected taste occurs.

### 3. AIRFLOW ADJUSTMENT

Slide the button on the side to adjust the airflow.



### 4. LIGHT INDICATION

#### Battery Indication

**Green light:** The battery capacity is at high level

**Blue light:** The battery capacity is at middle level

**Red light:** The battery capacity is at low level

**Vaping:** The light will gradually brightening and fading.

**Over-Time Protection:** The light will flash twice when the vaping time is over 8 seconds, and the device will stop output.

**Low Voltage Protection:** The light will flash 10 times when the device voltage is too low, and the device will stop output.

**Short Circuit:** The light will flash 5 times when the short-circuit occurs.

**Open Circuit:** The light will flash 7 times when the open-circuit occurs.

## 5. CHARGING

Please use a Type-C charging cable to charge the device.

When connecting the device to the power supply, the motor will vibrate once as a hint. The light will flash in different colours during charging and stay on in green when the charging is done. When disconnected from the power supply during charging, the light will flash three times and go off.

## WARNING

- Always keep the device away from children;
- Don't open the vaping device and don't attempt to repair the device yourself. Disassembling the device may damage it or may cause injury to you;
- Do not cover the Device with items such as newspapers, tablecloths, or curtains, and do not use this Device on soft support such as bedding, blankets, etc. It may cause burns and other injuries if the battery leaks or overheats during the night;
- Do not use your Device near sinks or other wet locations;
- Do not expose this Device to rain or moisture;
- Do not expose your device to extreme heat or cold. This may result in a risk of battery damage, other injury, or property damage;

- Do not leave the vaping device in direct sunlight or near heat sources;
- Do not use the vaping device near flammable liquids or gases.

## DISPOSAL

- Dispose of the packaging and the device shall always be in accordance with national and local laws and regulations.
- Never put the vaping device on fire. The built-in lithium-ion battery may



**ELUX**

[www.eluxtech.com](http://www.eluxtech.com)

