

- Do not use your device near sinks or other wet locations;
- Do not expose this device to rain or moisture;
- Do not expose your device to extreme heat or cold. This may result in a risk of battery damage, other injury, or property damage;
- Keep out of direct sunlight;
- Store in a temperature between 2°C - 25°C;
- Do not use the vaping device near flammable liquids or gases.

DISPOSAL

- Dispose of the packaging and the device shall always be in accordance with national and local laws and regulations.
- Never put the vaping device on fire. The built-in lithium-ion battery may burst or explode.

POSSIBLE SIDE EFFECTS

Nicotine is an addictive substance.

If you inhale too much nicotine or use the product too much you may experience one or more of the following effects:

- Feeling faint
- Nausea
- Headache
- Coughing
- Irritation in the mouth or throat
- Dizziness
- Stomach discomfort
- Hiccups
- Nasal congestion
- Vomiting (being sick)
- Chest palpitations
- Abnormal heart rate

If you experience any of the side effects listed or not listed in this leaflet, discontinue using this product. If the effect(s) continue after you stop use, consult your doctor or healthcare professional and bring this leaflet to their attention. There are no reported medical side effects with this product. If you believe you are experiencing/have experienced a side effect, please contact the manufacturer.

MANUFACTURER:

Dongguan Xingyan Technology Co., Ltd
Room 201, building 1, 36 Ruifeng Street, Dalingshan Dongguan City, Guangdong Province

E-MAIL: support@eluxtech.com

Designed in the UK

EVE LEGEND

POWERED BY **E-LUX**



User Manual





Scan for Video
Instruction

SPECIFICATIONS

Dimension (with Pod):
30*116*23mm
Battery Capacity: 1000 mAh
Charging: Type-C
Pod Capacity: 2ml
Container Capacity: 10ml

READ ALL OF THIS INFORMATION LEAFLET CAREFULLY BEFORE YOU START USING THIS PRODUCT

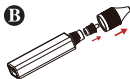
This product is intended only for adult smokers. This product is not recommended for non-smokers, young people (under the age of 18), pregnant or breast-feeding women and those experiencing general ill health.

INSTRUCTIONS

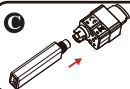
1. Installation



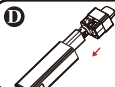
Take the pod off the device.
Remove the silicone plug on the bottom of the pod.



Open the container cap and remove the silicone plug.



Insert the container to the pod, and **push it all the way in to make sure it is safely connected.**



Install the combined part into the device, the ⚡ icon on the display will flash once as a hint.



Turn the device upside down for 10 seconds to fully fill the pod with e-liquid.

2. Vaping

A. Remove the silicone plug of mouthpiece.
B. Draw to vape.

3. Display

The screen will display the current battery capacity during vaping, and will go off 5 seconds after vaping.

4. Protection Function

A. Over-Time Protection: The ⚡ and % icons will flash twice when the vaping time is over 10 seconds, and the device will stop output.

B. Low Voltage Protection: The ⚡ and % icons will flash 10 times when the device voltage is too low, and the device will stop output.

C. Short Circuit: The ⚡ and % icons will flash 5 times when the short-circuit occurs.

D. Open Circuit: The ⚡ and % icons will flash 7 times when the open-circuit occurs.

5. Charging

Charge the device with a type-C charging cable and the ⚡ icon will flash during charging. The ⚡ icon will stop flashing and the battery capacity will show 100% when the charging is done.

GUIDE FOR GIFT DRIP TIP



WARNING

- Always keep the device away from children;
- Don't open the vaping device and don't attempt to repair the device yourself. Disassembling the device may damage it or may cause injury to you;
- Do not cover the device with items such as newspapers, tablecloths, or curtains, and do not use this device on soft support such as bedding, blankets, etc. It may cause burns and other injuries if the battery leaks or overheats during the night;